

2024 annual report to the Community

# Darlington Children's Centre

Darlington Children's Centre number: 3624

Partnership: Marion Coast



Preschool director:

Kim Cook

*KJCook*

Date of endorsement:

06/02/2025



Government  
of South Australia  
Department for Education

# Context Statement

Information about Darlington Children's Centre is available on the centres website, as well as the Australian Childrens Education and Care Quality Authority (ACECQA) website.

## Governing Council Report

On behalf of the Governing Council at Darlington Children's Centre, I would like to thank the incredible staff team for a wonderful year across the Kindergarten, Occasional Care and Playgroups.

2024 has seen a vast number of improvements made to the service. Our Director Kim has worked hard to make well needed upgrades, focussing on the Kindy side. Beginning the year with an amazing improvement to the children's bathroom, which saw a major improvement to the outdated space. This was followed up shortly after with the renovation of the kindy slide and climbing hill. We finish the year with approval to replace the flooring in the main kindy space. We also saw the replacement of the veranda over the old Kindy entrance, after it begun to collapse. This was facilitated by the Department.

During the Term 2 Holidays a school holiday playgroup was run, which attracted a large number of families, illustrating a need for services to support families during the break.

After requests from Governing Council our finance officer provided us with a user-friendly budget, which will allow staff to easily track spending, and has helped to identify the available funds for site improvement works.

We successfully ran multiple fundraisers across the year. The community lottery, Pyjama dress up day, and McCues Bakery fundraiser which combined raised over \$600. We also gratefully accepted a \$500 donation from The Lion's Club which went towards purchasing the fire pit used at the Family Fire night.

In October we were assessed under National Quality Standards. Staff excelled and we received a Meeting rating. We also received exceeding themes in all three areas. in area 1.1 Educational program and Practice and 7.1 Leadership. There were also exceeding themes in areas 1.3, 2.1, 4.2, 6.1, 6.2 and 7.2. We can now use this assessment to help with our planning for the ongoing years in aiming to get exceeding in more areas.

I would like to thank you for the privilege of being Chairperson this year and look forward to an exciting 2025.

Alison Riddell  
Chairperson



## Preschool Attendance

|             | Term 1 | Term 2 | Term 3 | Term 4 |
|-------------|--------|--------|--------|--------|
| 2021 centre | 83.5%  | 74%    | 82.4%  | 79.1%  |
| 2022 centre | 68.6%  | 72.6%  | 80%    | 77.1%  |
| 2023 centre | 86.4%  | 77.8%  | 78.4%  | 81.2%  |
| 2024 centre | 74%    |        | 77.4%  |        |

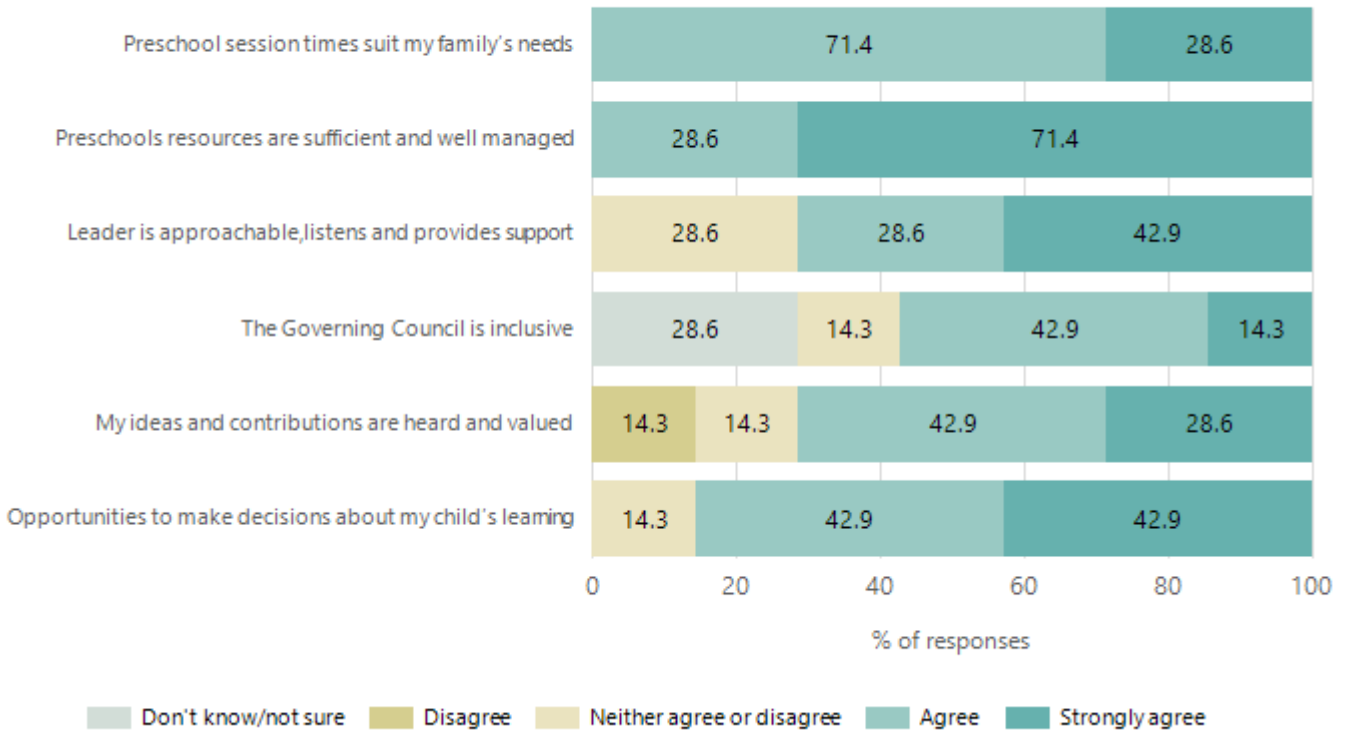
Based on attendances recorded in the two-week reference period each term. Data for eligible enrolments as described in the department's Enrolment policy. Attendance rates may differ to previous reporting with the transfer from calculations based on deemed attendance to actual attendance using booked hours divided by attended hours. Data Source: Department for Education Attendance Data, Semester 1 Report 2024. A blank cell indicates there were no students enrolled.

## Attendance Comment

In South Australia, preschool attendance is not compulsory, but it is strongly encouraged. Preschool gives children the best opportunity to develop skills, which prepare them for school. These benefits include establishing positive routines and habits, friendships and connections as well as developing communication, problem-solving and creative skills. All children are entitled to access a preschool program over 4 terms the year before they start school.

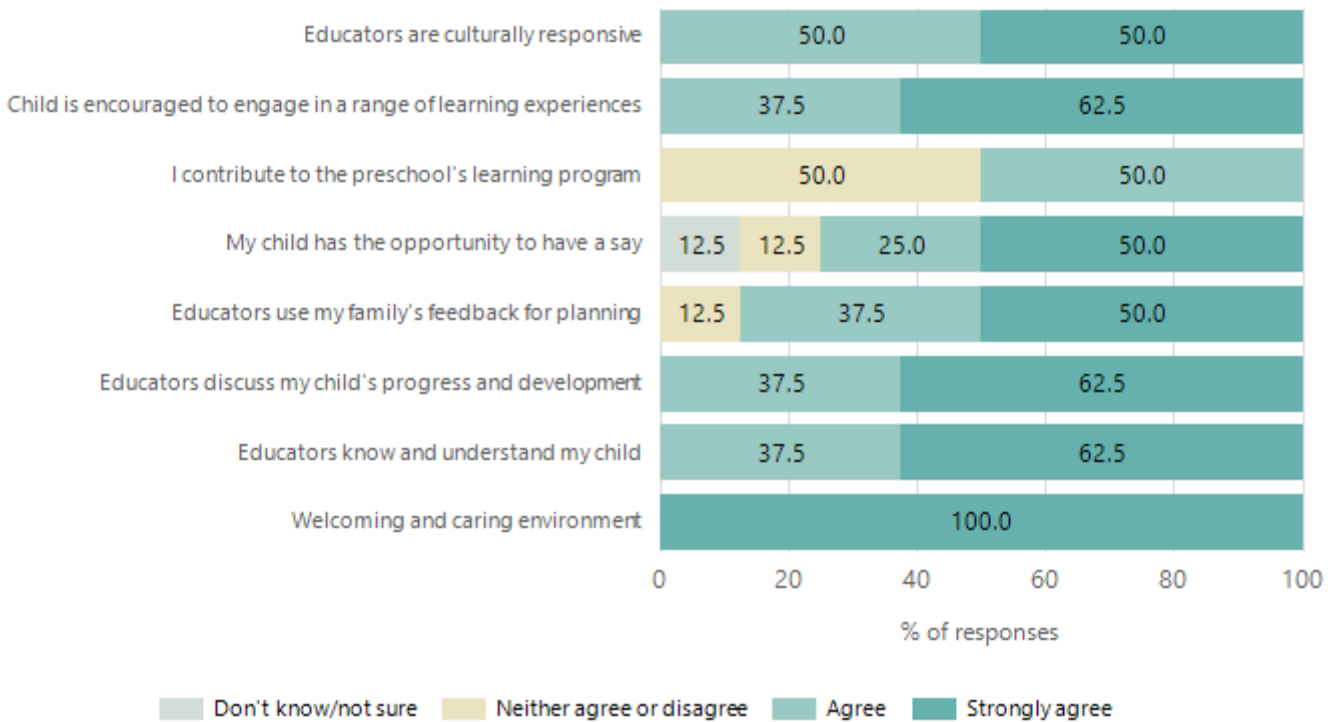
# Preschool Family Opinion Survey

## Governance, Leadership and Management



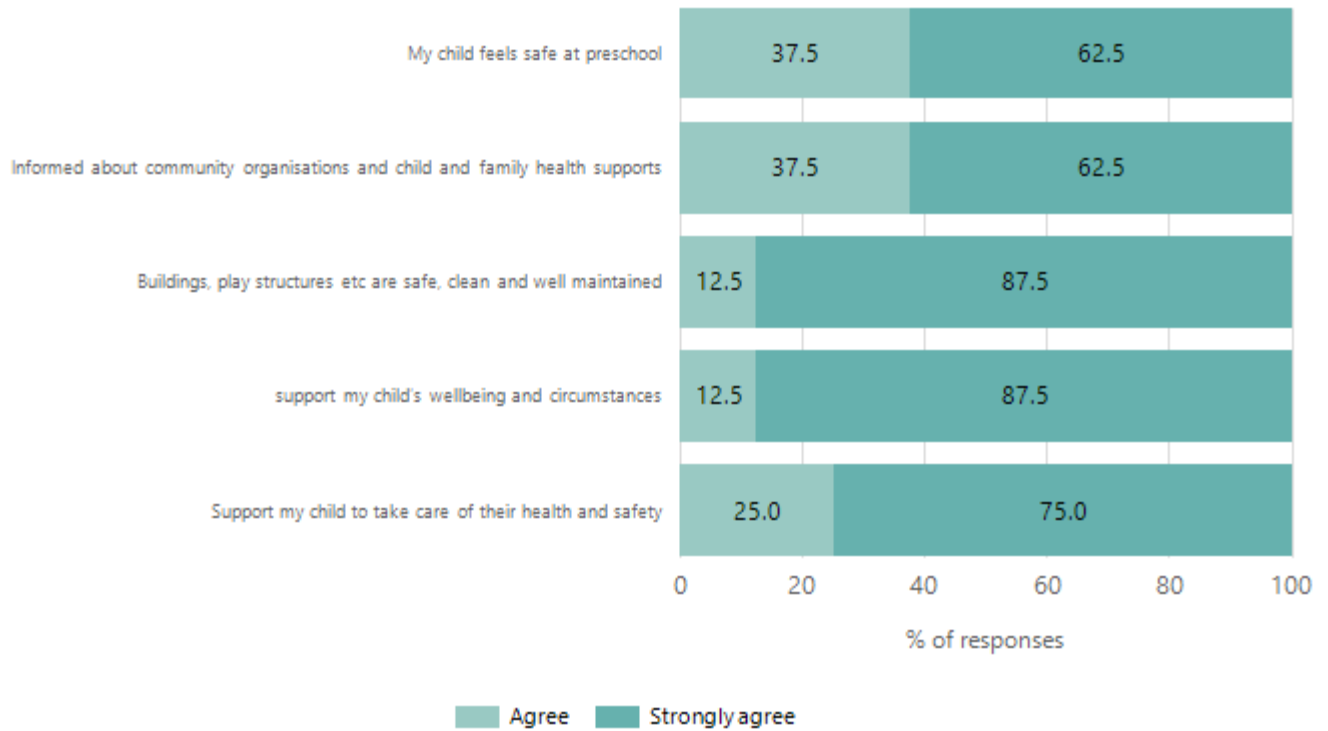
Data Source: 2024 Department for Education Preschool Family Opinions Survey, Term 3 2024.

## Quality of Teaching and Learning



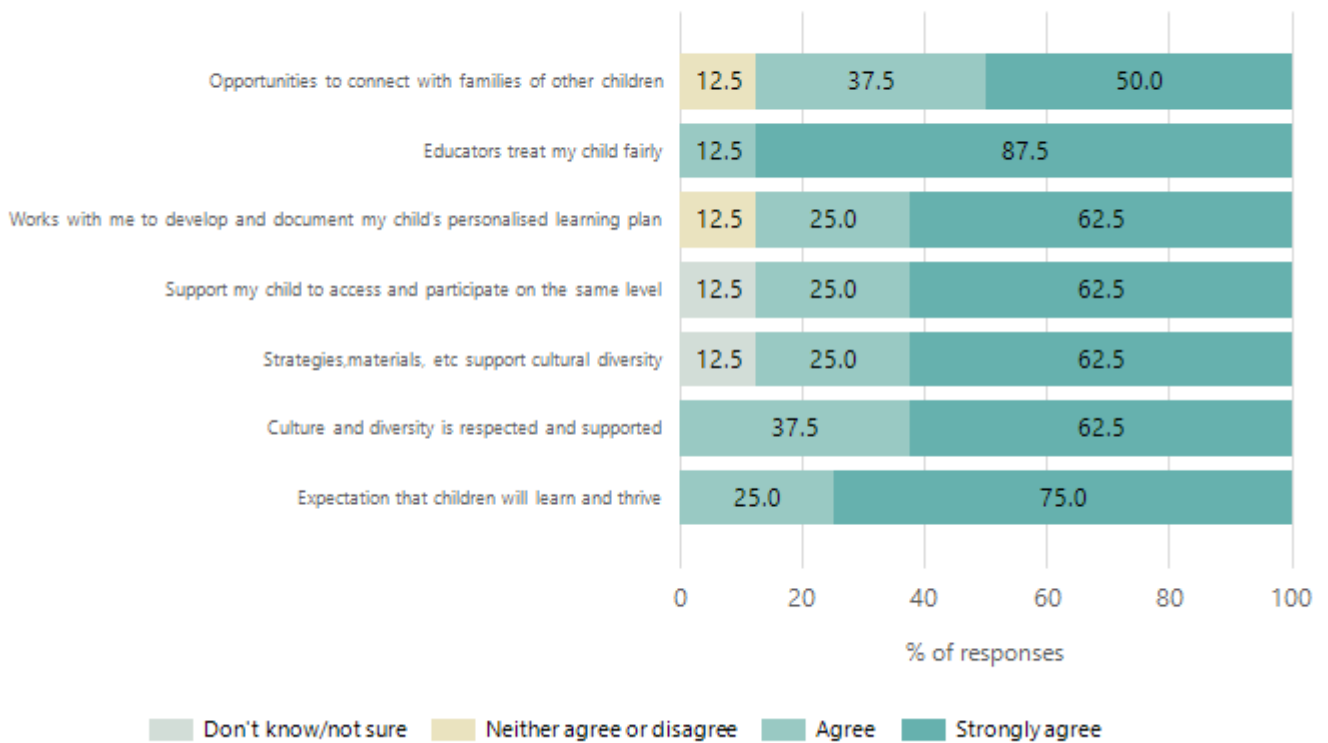
Data Source: 2024 Department for Education Preschool Family Opinions Survey, Term 3 2024.

## Safety, Health and Wellbeing



Data Source: 2024 Department for Education Preschool Family Opinions Survey, Term 3 2024.

## Support and Inclusion



Data Source: 2024 Department for Education Preschool Family Opinions Survey, Term 3 2024.

## Destination Schools

| Feeder Schools (Site number - Name) | 2022  | 2023  | 2024  |
|-------------------------------------|-------|-------|-------|
| 0565 - Blackwood Primary School     |       |       | 3.3%  |
| 0666 - Darlington Primary School    | 8.0%  | 7.7%  | 45.0% |
| 0933 - Warradale Primary School     |       |       | 3.3%  |
| 0984 - Seaview Downs Primary School |       | 3.1%  | 8.3%  |
| 9074 - Stella Maris Parish School   | 4.0%  | 6.2%  | 13.3% |
| 9999 - Unknown                      | 88.0% | 78.5% | 21.7% |

Note: The data is collected in term 3. It does not reflect actual schools enrolled in by existing preschool children. A blank cell indicates there was no data for students enrolled.

Data Source: Department for Education Destination Data Report, 2024.

# Highest Qualifications held by the teaching workforce and workforce composition

All teachers at this school are qualified and registered with the SA Teachers Registration Board.

| Qualification Level            | Number of Qualifications |
|--------------------------------|--------------------------|
| Bachelor's degrees or Diplomas | 3                        |
| Postgraduate Qualifications    | 1                        |

Data Source: Data extracted from Mandatory Workforce Information Collections as on the last pay date of June 2024. As self-reported by staff in the system.

Please note: Data includes staff who are Actively employed and on extended paid leave. Please note only the highest qualification of the Teaching staff is reported. Excludes any number of other certifications earned.

## Workforce composition including indigenous staff

|                       | Teaching Staff |                | Non-Teaching Staff |                |
|-----------------------|----------------|----------------|--------------------|----------------|
|                       | Indigenous     | Non-Indigenous | Indigenous         | Non-Indigenous |
| Full-Time Equivalents | 0.0            | 3.1            | 0.0                | 2.9            |
| Persons               | 0.0            | 4.0            | 0.0                | 6.0            |

Data Source: Data extracted from Mandatory Workforce Information Collection as on the last pay date of June 2024.

Please note: Data includes staff who are actively employed and on extended paid leave. "Indigenous category" is self-reported by staff in the system.

## Financial Statement

| Funding Source       | Amount      |
|----------------------|-------------|
| Grants: State        | \$3569.74   |
| Grants: Commonwealth | -           |
| Parent Contributions | \$19,693.65 |
| Fund Raising         | \$2834.19   |
| Other                | -           |

Data Source: School supplied data.